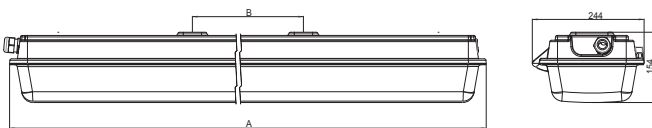


EXTEND – Ex – P

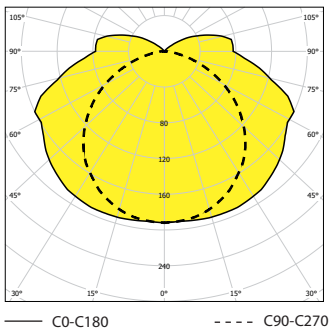
IP 66



FTZÚ 10 ATEX 0229X



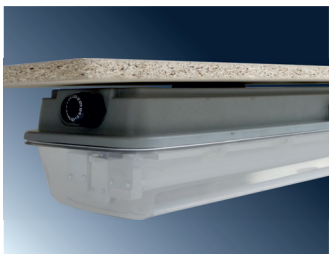
EXTEND-Ex-P, 2x36W, IP66



— CO-C180 - - - - C90-C270



051139



004642

Application: EXTEND-Ex-P dustproof light fixture with resistance against water jets is designed for premises with danger of explosion. Light fixture is certified by FTZÚ Ostrava-Radvanice (certificate FTZÚ 10 ATEX 0229X).

Ballast: Electronic ballast 220-250V/50-60Hz AC, 220-250V
Electronic ballast 110-127V/50-60Hz AC, 110-127V DC

Body: Plastic material GRP (polystyr filled with fibreglass), grey colour RAL7035

Cover: Plastic material PC (polycarbonate), transparent colour

Reflector: White painted metal sheet RAL9003

Fastening: Direct fastening on the carrier base, fastening on ceiling or wall by means of set of ceiling brackets or suspension with suspension brackets.

Connection: WAGO® Ex terminal block, max. diameter of wires 4,0 mm²; light fixture is ready to connect two wires (order additional cable gland)

Standard equipment: 1 pc sealing cable gland, 2 pcs sealing plug, double clamp of wire

On request: **Em** – non-maintained emergency lighting (1 h, 3 h) – see page 188

MULTI – maintained emergency lighting (1 h, 3 h) – see page 188

1F/3F – one or three phase through-wiring connection

Providing with cable glands for armoured cables

Code	Description	Dimensions (mm)
- electronic ballast without disconnecter, -20°C ≤ t_a ≤ +50°C		
054702	EXTEND-Ex-P-158-WOD, 1x58W	1628x830
054703	EXTEND-Ex-P-258-WOD, 2x58W	1628x830
- electronic ballast with disconnecter, -20°C ≤ t_a ≤ +50°C		
054706	EXTEND-Ex-P-158-D, 1x58W	1628x830
054707	EXTEND-Ex-P-258-D, 2x58W	1628x830
- electronic ballast without disconnecter, -20°C ≤ t_a ≤ +60°C		
054700	EXTEND-Ex-P-118-WOD, 1x18W	728x570
054701	EXTEND-Ex-P-218-WOD, 2x18W	728x570
053240	EXTEND-Ex-P-136-WOD, 1x36W	1328x830
053241	EXTEND-Ex-P-236-WOD, 2x36W	1328x830
- electronic ballast with disconnecter, -20°C ≤ t_a ≤ +60°C		
054704	EXTEND-Ex-P-118-D, 1x18W	728x570
054705	EXTEND-Ex-P-218-D, 2x18W	728x570
053250	EXTEND-Ex-P-136-D, 1x36W	1328x830
053251	EXTEND-Ex-P-236-D, 2x36W	1328x830
- non-maintained emergency mode, duration 1,5h, t_a 0-40°C		
054710	EXTEND-Ex-P-118-Em, 1x18W, 1,5h	728x570
053252	EXTEND-Ex-P-136-Em, 1x36W, 1,5h	1328x830
054711	EXTEND-Ex-P-158-Em, 1x58W, 1,5h	1628x830
- electronic ballast, maintained emergency mode, duration 1,5h, t_a 0-40°C		
054716	MULTIEXTEND-Ex-P-118-D, 1x18W, 1,5h	728x570
054717	MULTIEXTEND-Ex-P-218-D, 2x18W, 1,5h	728x570
053254	MULTIEXTEND-Ex-P-136-D, 1x36W, 1,5h	1328x830
053255	MULTIEXTEND-Ex-P-236-D, 2x36W, 1,5h	1328x830
054718	MULTIEXTEND-Ex-P-158-D, 1x58W, 1,5h	1628x830
054719	MULTIEXTEND-Ex-P-258-D, 2x58W, 1,5h	1628x830
- special equipment		
051139	Set of ceiling brackets EXTEND (2pcs)	
004642	EXTEND set of pole brackets (2pcs)	

Application of light fixtures in areas with danger of explosion

DANGER	Marking of external influences	Classification areas	
		Marking	Formation prescription
Danger of explosion of flammable dust	BE3N1	ZONE 21	ČSN EN 60079-14 ČSN EN 60079-10-2
Danger of explosion of flammable gases and vapors	BE3N2	ZONE 1	ČSN EN 60079-14 ČSN EN 60079-10-1

EXTEND- Ex - P	EXTEND- Ex - P - WOD
⊕ II 2G Ex d e mb IIC T4 Gb	⊕ II 2G Ex e mb IIC T4 Gb
⊕ II 2D Ex tb IIIC T 72°C Db, IP66	⊕ II 2D Ex tb IIIC T 72°C Db, IP66

System of marking

EXTEND-Ex-P-yy-WOD	EXTEND -Ex - P without disconnecter
EXTEND-Ex-P-y36-D	EXTEND -Ex - P with disconnecter
EXTEND-Ex-P-y36-1P	EXTEND -Ex - P+ with one-phase through wiring connection
EXTEND-Ex-P-x36-3P	EXTEND -Ex - P+ with three-phase through wiring connection

y – marking number of lamps (1 / 2)

This project has been realized with the financial support from the national budget through the Ministry of Industry and Trade

ČVUT - Faculty of Electrical Engineering cooperated on this project



EUROPEAN UNION
EUROPEAN REGIONAL DEVELOPMENT FUND
INVESTMENT IN YOUR FUTURE