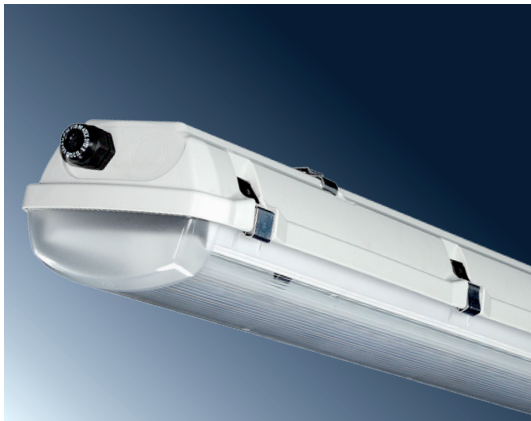


EXTRA-Ex-LED

IP 66



Application: dustproof lighting fixture with resistance against water jets is designed for lighting premises with danger of explosion. Lighting fixture is certified by FTZÚ Ostrava-Radvanice (**certificate FTZÚ 16 ATEX 0167X**).

Ballast: electronic 110 – 254V, 50/60Hz
220 – 250V, 0Hz

Body: Plastic material PC (polycarbonate), grey colour RAL7035, chemical resistance

Cover: Plastic opal material PC (polycarbonate), chemical resistance

Fastening: Direct fastening on ceiling or wall lighted area by means of ceiling fastening brackets (basic equipment)

Connection: Screwless three-pole terminal block, max. diameter of wires 2,5 mm²; lighting fixture is ready to connect two wires (order additional cable gland)

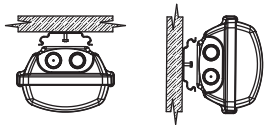
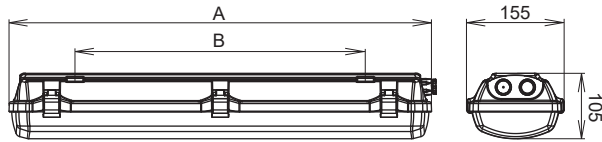
Standard equipment: 1 pc sealing cable gland, 3 pcs sealing plug, 2 pcs fastening spring, double clamp for power cables, stainless steel clips

On request: **1F/3F** – one or three phase through-wiring connection

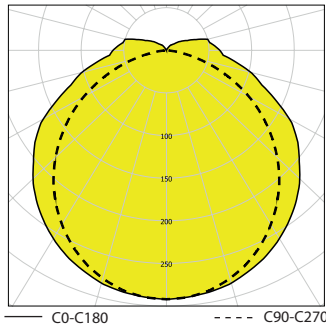
Em – non-maintained emergency lighting (1,5 h, 3 h)

MULTI – maintained emergency lighting (1,5 h, 3 h)

NANO-protection by means of special NANO layers (hydrophobia, oilphobia, antibacterial protection)



EXTRA-Ex-LED, IP66



		Tc/λ	(lm)	(W)**	AsBxCxD/E (mm)
-20°C < ta < +50°C					
055290	EXTRA-Ex-LED-2500-218-4K	4000	2360	28	670 x 460
055291	EXTRA-Ex-LED-5000-236-4K	4000	4650	55	1280 x 880
-maintained emergency mode 1,5h;3h, 0°C < ta < +40°C					
055294	MULTIEXTRA-Ex-LED-5000-236-4K, 1h	4000	4650/10%	55	1280 x 880
055295	MULTIEXTRA-Ex-LED-5000-236-4K, 3h	4000	4650/5,5%	55	1280 x 880
-non-maintained emergency mode 1,5h;3h, 0°C < ta < +40°C					
055292	EXTRA-Ex-Em-LED-5000-236-4K, 1h	4000	476	-	1280 x 880
055293	EXTRA-Ex-Em-LED-5000-236-4K, 3h	4000	260	-	1280 x 880

- special accessories

008060	Cable gland Ex M20x1,5
008090	Sealing plug Ex M20x1,5
008097	Plastic nut WISKA EMUG 20 M20x1,5

(lm)* - luminous flux, (W)** - input power

Type marking

EXTRA-Ex-LED-XXXX-YYY	type for standard operation
MULTIEXTRA-Ex-LED-XXXX-YYY	type for maintained emergency mode
EXTRA-Ex-Em-LED-XXXX-YYY	type for non-maintained emergency mode
XXXX*	luminous flux (lumen) 2500/5000
YYY*	type pf used housing 218/236

Application of light fixtures in areas with danger of explosion

	Marking of external influences	Classification areas	
		Marking	Formation prescription
Danger of explosion of flammable dust	BE3N1	ZONE 21,22	ČSN EN 60079-14 ČSN EN 60079-10-2
Danger of explosion of flammable gases and vapors	BE3N2	ZONE 1,2	ČSN EN 60079-14 ČSN EN 60079-10-1

EXTRA-Ex-LED

Ⓜ II 2G Ex eb mb op is IICT4 Gb

Ⓜ II 2D Ex tb IIIC T67°C Db



For areas with with the appearance of oily emulsions, aggressive chemicals, vibration, mechanical stress we recommend to use the fixtures series PITBUL-Ex (LED), RAMBO-Ex, AQUA-Ex, EXTEND-Ex (LED).