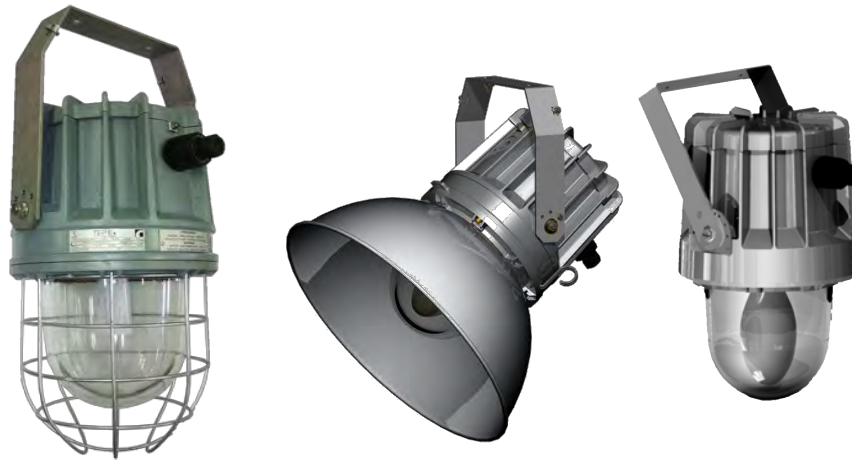


## Pendant

Zone 1, 2, 21, 22



### APPLICATION

The luminaire is designed to light the industrial areas and facilities, also outdoor spaces with an explosion hazard of gases, vapors and flammable fogs mixed with air.  
Hazardous zones: 1,2, 21, 22.

### CONSTRUCTION

Housing: aluminium powder painted casting

Diffuser: borosilicate glass

Accessories: protected galvanized steel gird, assembly kit for wall, pipe and ceiling mounting

### TECHNICAL DATA

<b>Certificate:</b>	EXA 14 ATEX 0001
<b>Marking:</b>	CE 0722
<b>Apparatus category:</b>	II 2GD
<b>Marking of explosion protection:</b>	Ex d e IIC T3-T4 Gb Ex tb IIIC T140°C-150°C Db
<b>Ambient temperature:</b>	-40°C ≤ Ta ≤ +50°C - according to selection table
<b>Degree of protection:</b>	IP 66 category 1
<b>Resistance to shock:</b>	IK 08
<b>Protection class :</b>	I (protective earthing)
<b>Rated voltage:</b>	230 V (-10% / +6%) (other voltage on request)
<b>Frequency:</b>	50Hz (60Hz on request)
<b>Rated power:</b>	See selection table
<b>Power factor:</b>	cos φ= 0,95 , compensated
<b>Cable entries:</b>	Two entries M20, with one Ex d plug and one Ex d e adapter, type ADP 03/23, for cable φv 6-15 mm
<b>Connecting terminals:</b>	L, N, PE; max. 2 x 2,5 mm <sup>2</sup> solid, flexible, terminal for external -PA connection; max 2x6mm <sup>2</sup> , tightening torque for screw clamp 2,2 Nm
<b>Cable gland and plug:</b>	II 2GD Ex e M25 IP66 tightening torque for gland screw 2,5 Nm, tightening torque for gland or plug 3,5 Nm
<b>Weight:</b>	23 kg
<b>Packing:</b>	The packing contains: 1 pcs 570x405x400 mm

### MOUNTING

Pendant, on pipe, wall, ceiling mounting  
Allow inclination ±45° of vertical mounting



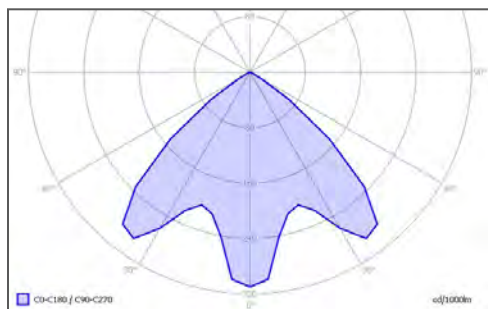
EXA 14 ATEX 0001



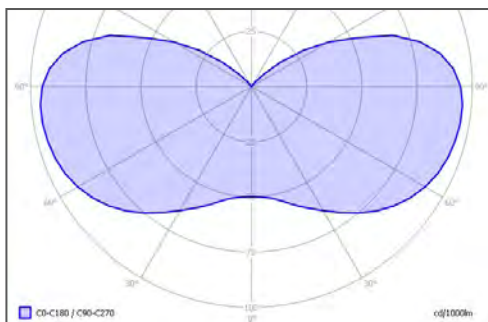
## MODEL CODE

MODEL CODE	WATTAGE	LAMP TYPE	LUMINOUS FLUX [lm]	LAMP HOLDER	TEMPERATURE CLASS (gas)		T <sub>0</sub> MAX (dust)
					T <sub>a</sub> =40°C	T <sub>a</sub> =50°C	T <sub>a</sub> =40°C
PLFL/250 HIE, HSE, HSE Twinarc	250 W	HIE	20000	E40	T4	T3	140°C
		HSE	28000				
		HSE Tw	32000				
PLFL/250 HME	250 W	HME	20000	E40	T4	T3	140°C
PLFL/250 LME	250 W	LME	5500	E40	T4	T3	140°C
PLFL/500 A,QT	500 W	A	8400	-	-	-	150°C
		QT	10250				

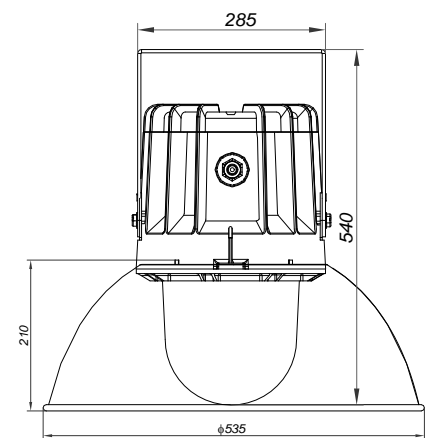
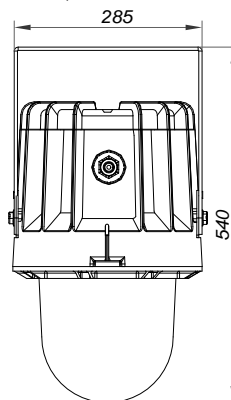
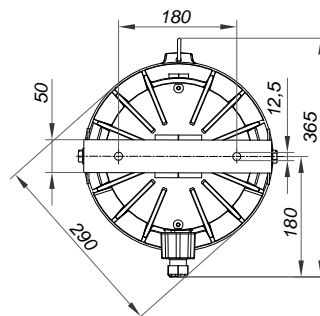
## POLAR CURVE, DIMENSION DRAWING [mm]



With external reflector



Without external reflector



## SPARE PARTS AND ACCESSORIES

SKETCH	DESCRIPTION	CODE	SKETCH	DESCRIPTION	CODE
	Replacement glass PLFL	PLFL 10-120		Gasket set PLFL	PLFL 10-160
	Wire guard PLFL	PLFL 10-130		Ex d plug M20,	SPC Exd 20
	Base plate with lamp holder, ballast	PLFL 10-140		Light bulb	According to type table
	Junction box ADP 23	PLFS-T 10-150		PLFL fixing bracket for tube R 1 1/2"	PLFL 20-120
	PLFL external reflector	PLFL 20-100		PLFL mounting bracket (ceiling and wall mounting)	PLFL 20-130